



Solar Carports
Steel Structure

MODEL DAYLIGHT SOLAR CARPORT

DESIGN
PRODUCTION
INSTALLATION

PILLAR
creates sustainable solutions
for your business



Model DAYLIGHT L

Construction type:
L-Type (one row)

Multiples of 3 parking spaces

3 kW

average capacity
per 1 parking space

24

number of modules
for 3 parking space

10

years
warranty



Structural Paremeters

PV dimensions	1722 x 1134 x 30 mm
PV layout	Vertically 3 rows
Tilt angle	10°
Width of the parking space	2 500 mm
Snow load, wind load	Snow: 2,0 kPa / Wind: 0,5 kPa - (higher loads possible)
Service life	25 years
Water proof	✓
Inverter mount	✓
Structure elements	Consoles - S235+HDG Columns, beams - S355+HDG
Hardware group	Stainless steel or DELTA
PV module fixing hardware	Stainless steel
Foundation	Ground screws or reinforced concrete foundation are optional
Painting	Optional
Water drainage	Optional
Vehicle impact protection	Optional
Lighting	Optional

Model DAYLIGHT T

Construction type:
T-Type (two rows)

Multiples of 6 parking spaces

3 kW

average capacity
per 1 parking space

48

number of modules
for 6 parking space

10

years
warranty



Structural Paremeters

PV dimensions	1722 x 1134 x 30 mm
PV layout	Vertically 3 rows
Tilt angle	10°
Width of the parking space	2 500 mm
Snow load, wind load	Snow: 2,0 kPa / Wind: 0,5 kPa - (higher loads possible)
Service life	25 years
Water proof	✓
Inverter mount	✓
Structure elements	Consoles - S235+HDG Columns, beams - S355+HDG
Hardware group	Stainless steel or DELTA
PV module fixing hardware	Stainless steel
Foundation	Ground screws or reinforced concrete foundation are optional
Painting	Optional
Water drainage	Optional
Vehicle impact protection	Optional
Lighting	Optional

Model DAYLIGHT Y

Construction type:
Y-Type (two rows)

Multiples of 6 parking spaces

3 kW

average capacity
per 1 parking space

48

number of modules
for 6 parking space

10

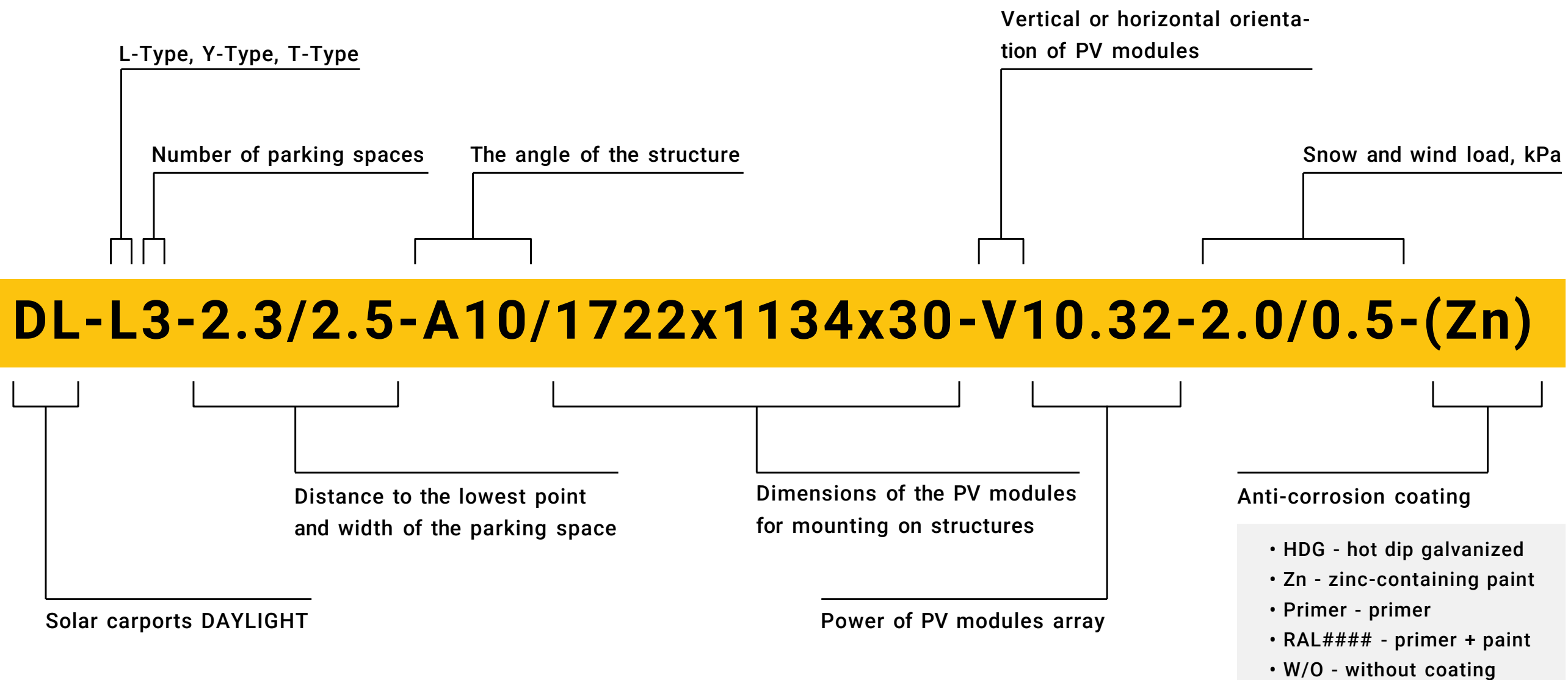
years
warranty



Structural Parameters

PV dimensions	1722 x 1134 x 30 mm
PV layout	Vertically 3 rows
Tilt angle	10°
Width of the parking space	2 500 mm
Snow load, wind load	Snow: 2,0 kPa / Wind: 0,5 kPa - (higher loads possible)
Service life	25 years
Water proof	✓
Inverter mount	✓
Structure elements	Consoles - S235+HDG Columns, beams - S355+HDG
Hardware group	Stainless steel or DELTA
PV module fixing hardware	Stainless steel
Foundation	Ground screws or reinforced concrete foundation are optional
Painting	Optional
Water drainage	Optional
Vehicle impact protection	Optional
Lighting	Optional

SOLAR CARPORT DAYLIGHT MODEL TYPES



L

type



For parking lots placed along walls and fences

T

type



"South" design with peak generation at midday

Y

type

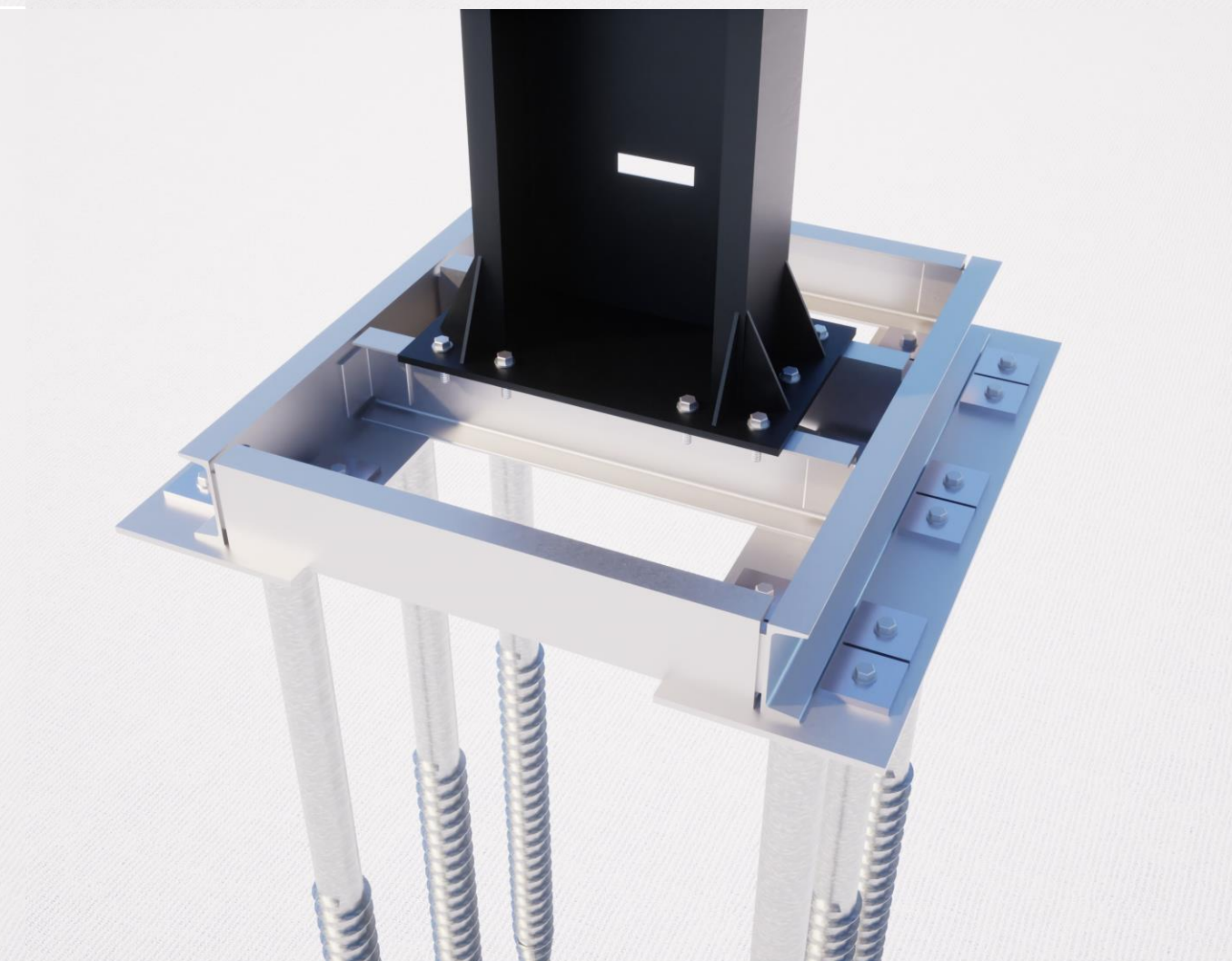
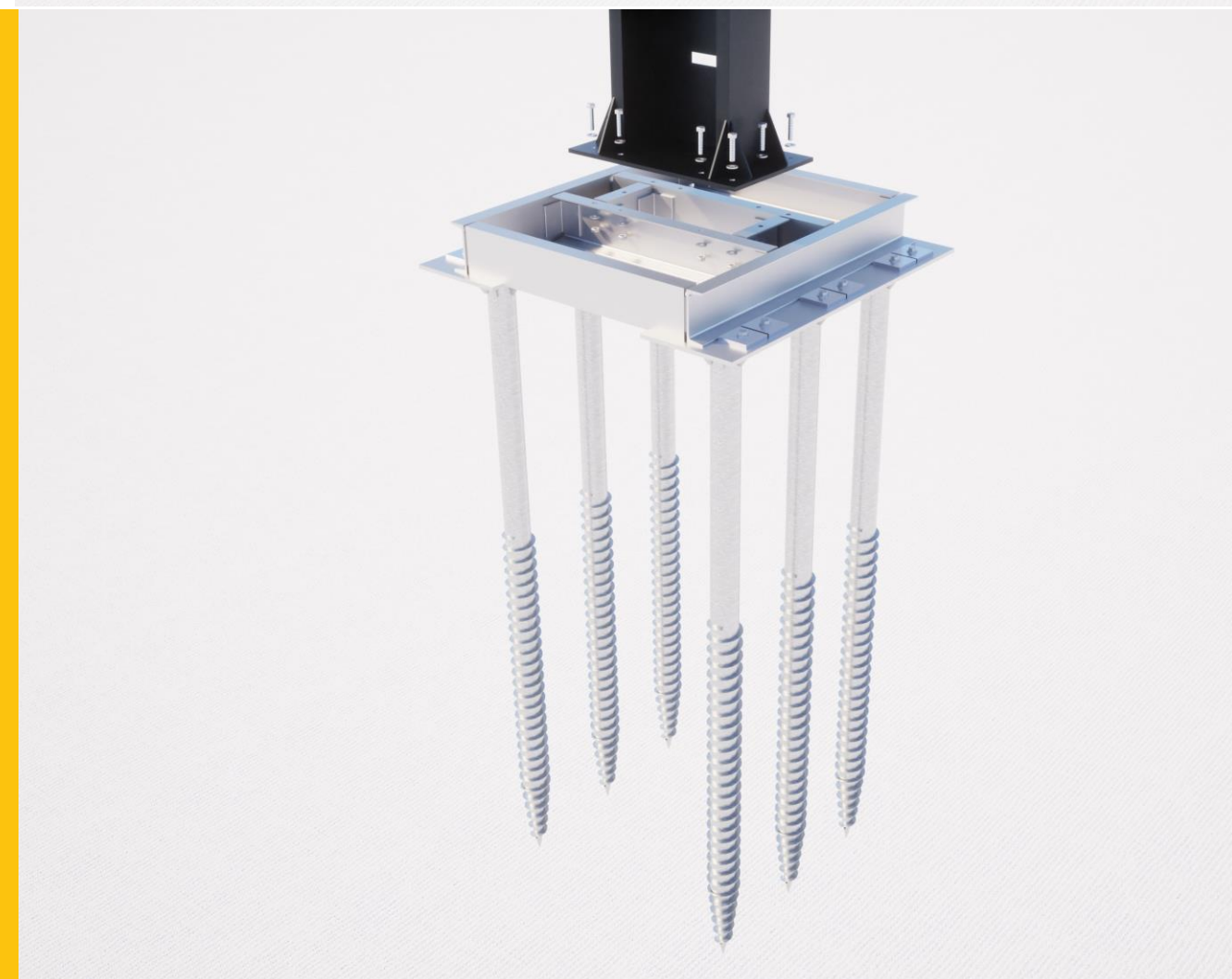


"East – West" designed for balanced generation throughout the day

BASEMENT SOLUTIONS

FOUNDATION TYPES:

- reinforced concrete foundation
- ground screws combined with concrete



WATER DRAINAGE SYSTEM

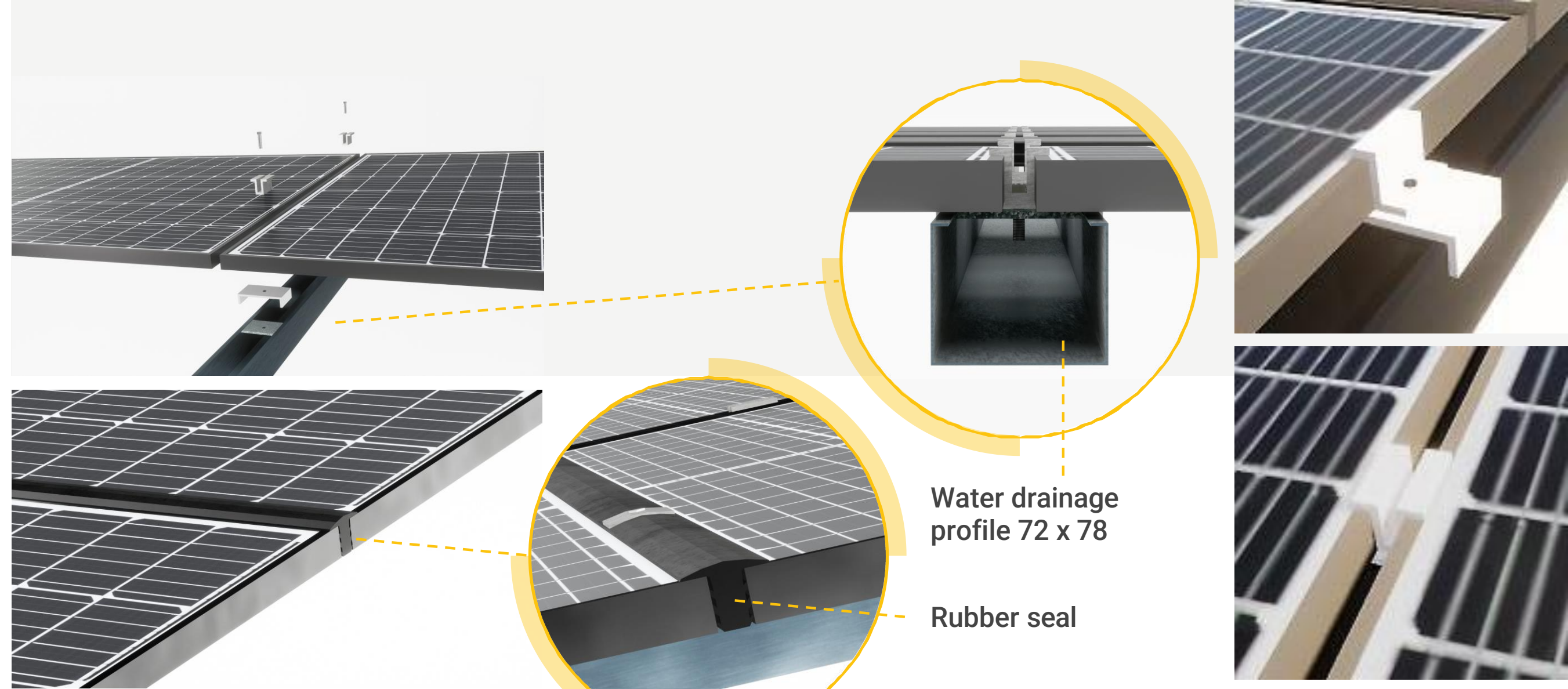
**The drainage system can be provided
as galvanized gutter, pipe and
additional elements**

**Drainage passes through the
columns of the carport:**



WATER PROTECTION

- along vertical gaps with 72 x 78 profiles
- along horizontal gaps with rubber sealing



PV FASTENING

are mounted
on the water drainage profile



CRASH PROTECTION

**Vivid stickers (200 x 2000 mm)
can be placed on the columns
to enhance visibility of the structure**

**Steel bumps can be installed
to protect the carport columns**



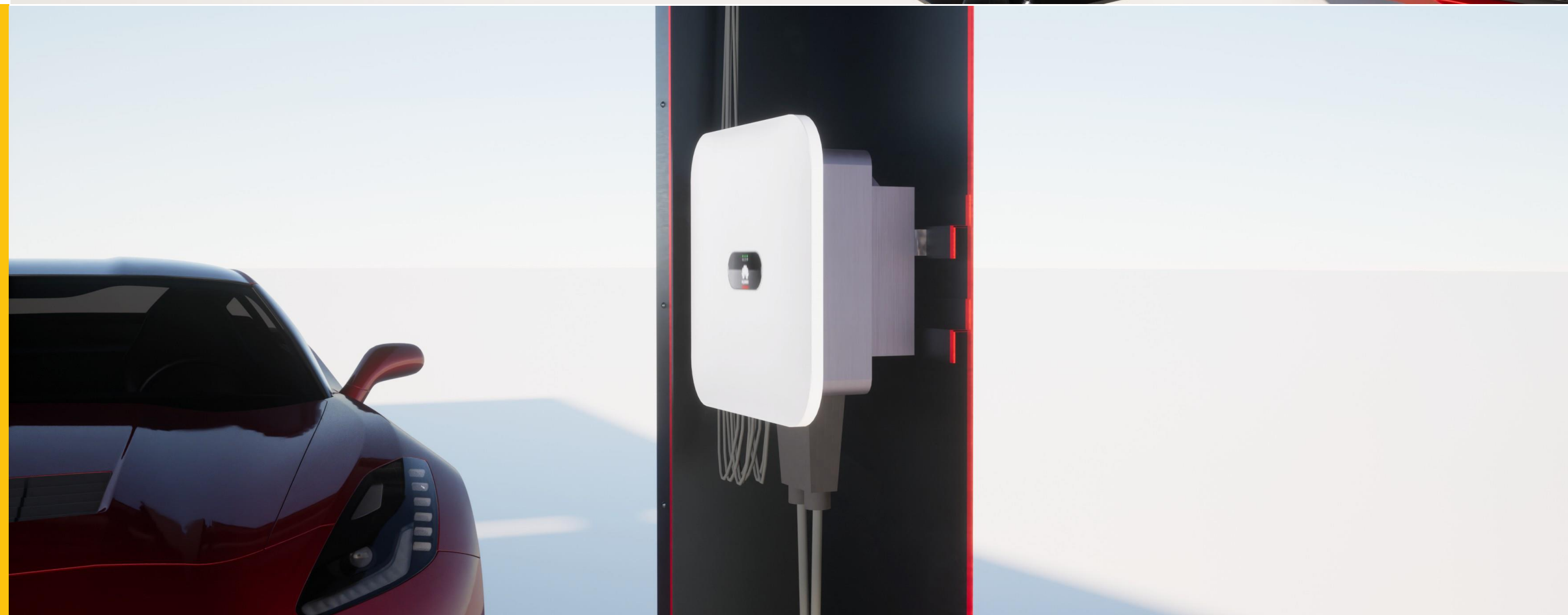
CABLE TRUNKS AND INVERTER MOUNTING

We designed the carport to place electrical equipment easily

- brackets for inverter
- holes and cable trays
- the charging station can be integrated

The Inverter cables are laid through the column:

The inverter is integrated inside the column with the help of welded mounting brackets



ELECTRICAL EQUIPMENT INTEGRATION



LIGHTING

Lighting solution meets the
International Standard DIN 67528



OUR CONTACTS:



+386 40 377 772, +386 51 371 835



Babna Gora 58, 1355 Polhov

Gradec



sales@sunpark.si



PRESENTATION



TECH

OUR CERTIFICATES:

ISO 9001:2015

certification

EN 1090-1:2012
EN 1090-2:2018

DIN EN ISO 3834-3

